

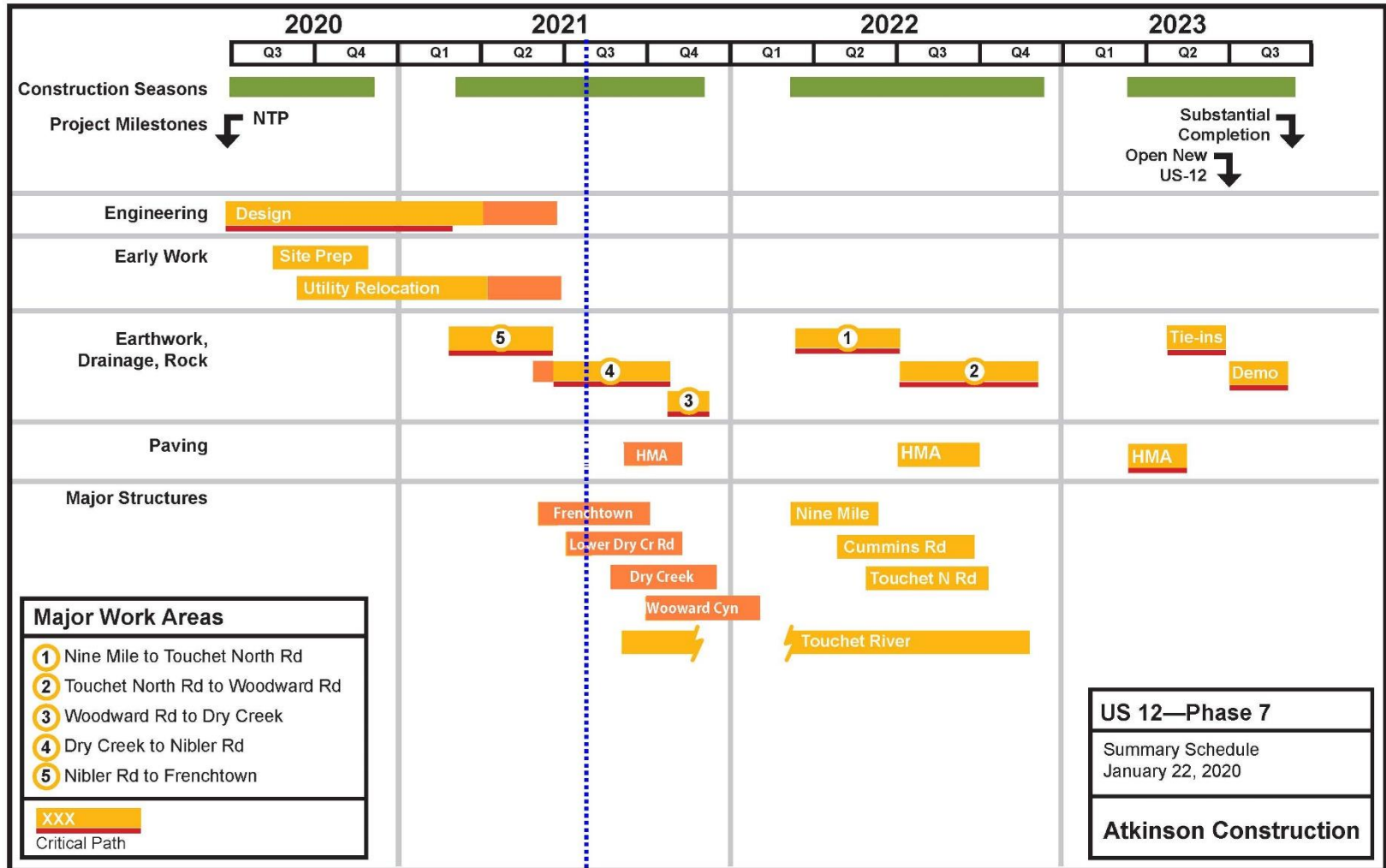
US 12 Phase 7 – Nine Mile Hill to Frenchtown

Alex Sanguino – WSDOT Project Engineer

Matt Rugh – Atkinson Project Manager

July 27, 2021

Timeline



Current progress

US 12/Nine Mile Hill to Frenchtown Vic. – Build New Highway

NINE MILE NOW

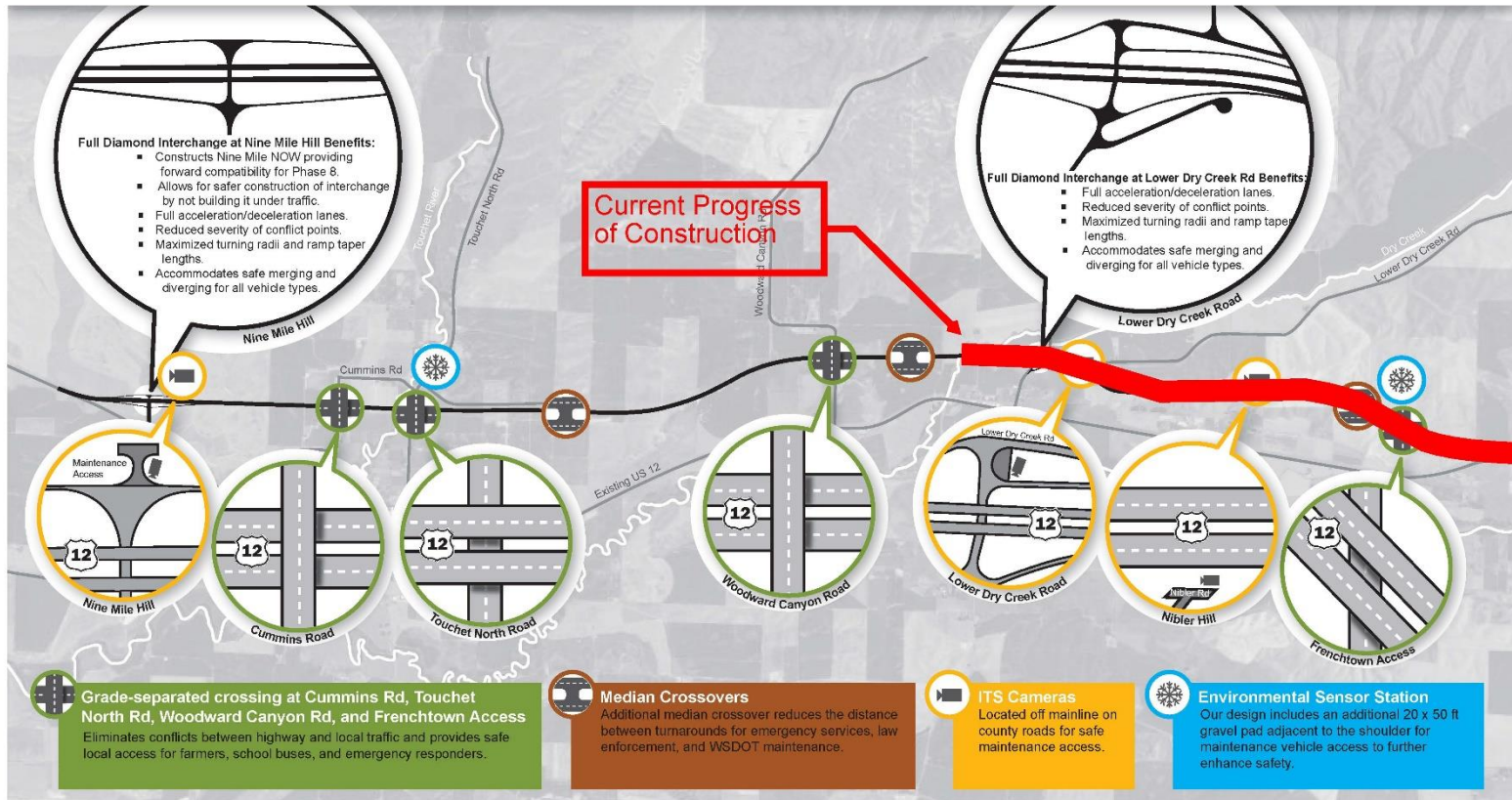
88% traversable slopes with adequate recovery zones
(195,383 LF out of 222,180 LF).

88% obstruction-free clear zone (195,383 LF out of 222,180 LF).

41 of 45 curves flattened to exceed design standards which maximizes sight distance and stopping sight distance for all vehicle types.

Median widths exceed 50 feet in all areas except in tapers around bridges to maximize obstruction-free clear zone.

Shoulder widths maximized to increase driver comfort and provide adequate space for disabled vehicles.



Section 2 Safety: Reduce Crash Frequency and Severity

Figure 2.3 • The geographic locations of various design elements along our proposed alignment for US 12 Phase 7.

Construction update



Lower Dry Creek Interchange



Frenchtown Structure



Frenchtown Deck Slab Shoring



Questions?

Contact

Matt Rugh

matt.rugh@atkn.com

Alex Sanguino

SanguinA@wsdot.wa.gov