

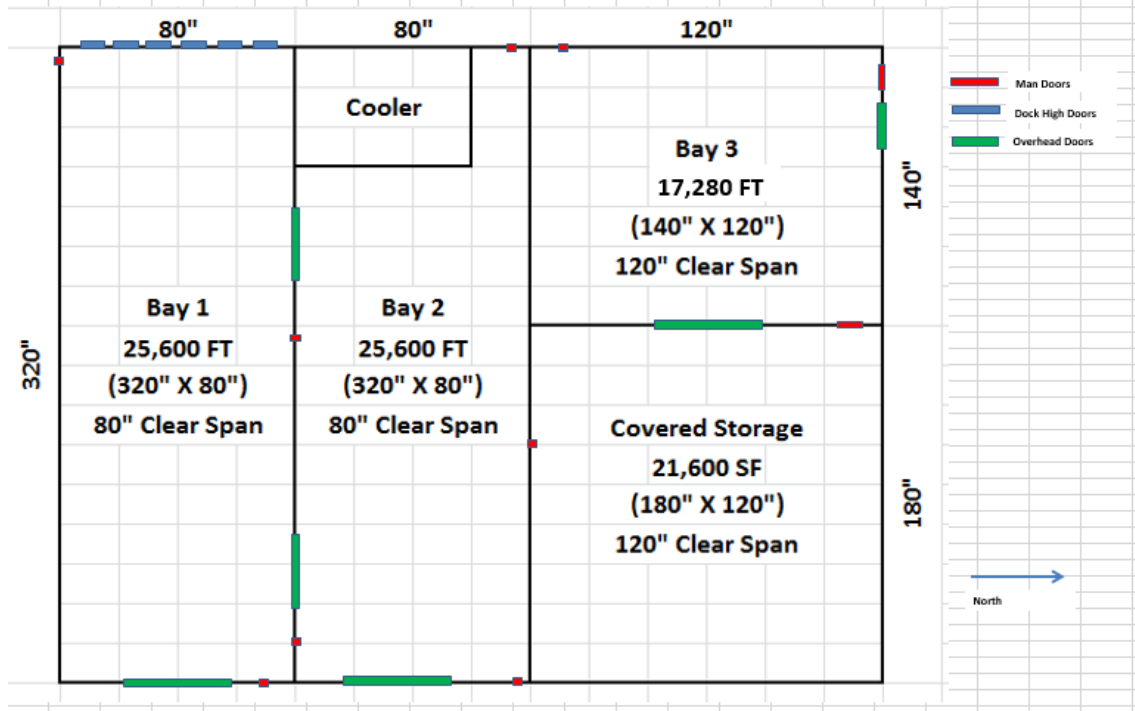
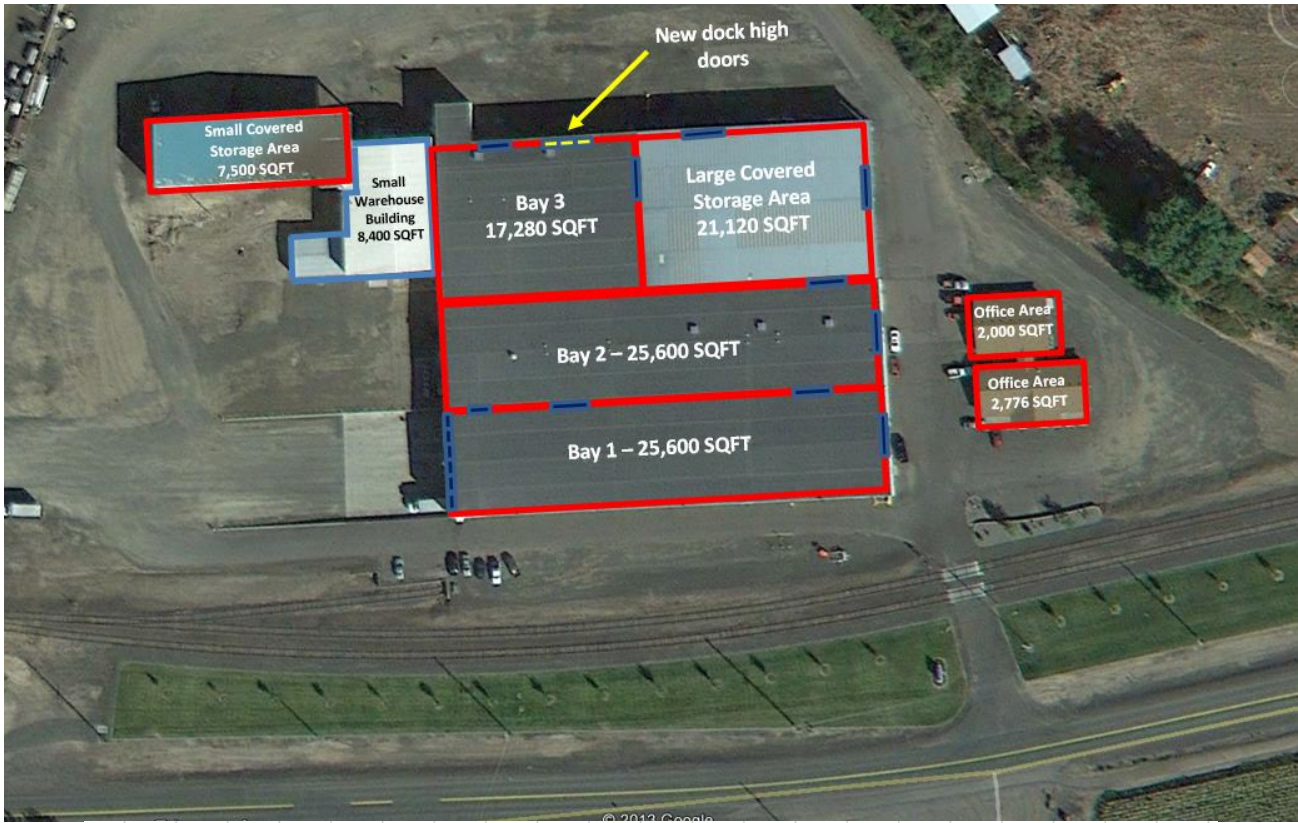


38,400 SQFT
Manufacturing Building Available for Lease
Isaacs Manufacturing Facility
3301 East Isaacs Avenue, Walla Walla, WA 99362



Facility Description:

- Main Building:** 104,400 SQFT Metal Building
Bay 1 – 25,600 SQFT - 80' clear span, 24' between columns, 24' eave height - **Leased**
Bay 2 – 25,600 SQFT - 80' clear span, 24' between columns, 24' eave height - **Leased**
Bay 3 – 17,280 SQFT - 120' clear span, 24' between columns, 24' eave height - **Available**
CS #1 – 21,120 SQFT - 120' clear span, 24' between columns, 24' eave height - **Available**
Small Building (SB) - 8,400 SQFT Metal Building (73' x 100') - **Leased**
CS #2 - 7,500 SQFT Metal Building (50'x150') 77' clear span, 24' between columns - **Leased**
Office 1: 2,722 SQFT Office space, wood framed (detached) - **Leased**
Office 2: 2,000 SQFT Office space, wood framed (detached) – **Leased**
Truck Docks: Nine (9) overhead doors; three (3) at grade, six (6) dock high loading in Bay 1)
- Lot size:** 12 acres with room for additional expansion
- Zoning:** Industrial – County of Walla Walla
- HVAC:** Forced gas heaters in Bays 1, 2 & 3, HVAC in office complex
- Fire:** Overhead wet and dry sprinkler system throughout the buildings except for CS#2.
- Rail:** Rail Spur On-Site: BNSF – Operated by Blue Mountain Rail Road.
- Utilities:**
* Water: On-site - 8" diameter, City of Walla Walla
* Sewer: On-site-Septic system. City sewer service can easily be connected.
* Electrical: 2,500 AMP - 480/240-volt 3 phase, 220/110 single phase.
* Natural Gas: On-site - 2" diameter
- Transportation:** Highway: Facility is adjacent to State Highway 12. The major population centers of Seattle & Spokane, Washington; Portland, Oregon; and Boise, Idaho are all overnight by truck from Walla Walla. Air: Minutes from the Walla Walla Regional Airport. Daily direct commercial flights to Seattle International Airport through Alaska Air and air package services are provided by Ameriflight.



For more information contact:

Pat Reay or Paul Gerola

Port of Walla Walla, 310 A Street, Walla Walla, WA 99362

(509) 525-3100 Phone

e-mail: pr@portwallwalla.com or pg@portwallawalla.com